



The Philately Fun Times of the Columbia Philatelic Society

May 2013

Dave Benish, Ed., 696-2597

www.columbiaphilatelicsociety.org

Next Meeting

The next meeting of the Columbia Philatelic Society will be Tuesday, **May 21st** at our usual place, Boone Landing Activity Room, 109 Keene St. in Columbia. The meeting will start at 7 PM. The club meets the 3rd Tuesday of every month at this location.

This month we have a special program by our friend and honorary member from St. Louis, **Alan Barasch**. It will be on

The Isle of Rhodes

Alan says that the stamps of the Isle of Rhodes are related to the Italian Occupation of the Aegean Islands that ran from 1912 until 1944. The Ottoman Empire lost the islands before WWI and Italy lost them to Germany during WWII. There is a rich history of Rhodes going back 2,200 years to the days of the Colossus of Rhodes and continuing to the present day under Greek rule.

Alan will feature covers from the Ottoman period including French Offices in the Ottoman Empire, many of the stamps of the Italian period, and some later issues.

If past programs by Alan are any indication, this should be a great program you'll want to see!

Last Time

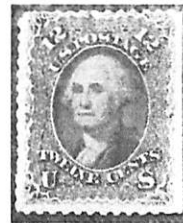
We had one of the best auctions ever! A HUGE number of lots were featured, including a substantial number of \$3+ items that had a live auction. I picked up several nice lots at a good price, and so did most other members.

Thanks to everyone who brought (or bought!) something. If you had some lots left over that didn't sell that evening, you might want to consider donating some of them to next month's Club & Columbian Dollar Auction or using them for the Fall Auction in November.

2013 Officers

Here's our slate of officers for this year:

President: **Charles Peterson** (442-0042)
V. President: **Don Barnett** (573-635-1853)
Treasurer: **John Marquardt** (474-7254)
Libry/APS: **Chuck Barsamian** (446-9110)
Newsletter: **Dave Benish** (696-2597)



Upcoming 2013 Programs

May: Isle of Rhodes (**Alan Barasch**)
Jun.: Club Benefit/Columbian \$ Auctions
Jul.: Stamp Bingo (**Dave Benish**)
Aug.: APS Program (TBA)
Sep.: "Clothesline" (1-Page) Exhibits
Oct.: Precancels (**T.G. Rehkop**)
Nov.: Fall Auction/Elections
Dec.: Christmas Party

Highway Post Offices

Highway Post Offices in the U.S. were motor vehicles using regular highway routes, picking up, sorting, and dropping mail en route. It originated in 1941, just prior to World War II.

Miniature Sheet

A miniature sheet is a sheet of stamps much smaller than the normal sheet size, sometimes containing only one stamp. Many, but by no means all, have exaggerated margins with special inscriptions and are designed as souvenirs rather than for postal purposes, though they are valid for postage.

Stamp Care this Summer

If last year was any indication, we'll soon be facing a long, hot, humid summer. Beyond keeping ourselves cool and comfortable, consider keeping your stamps the same.

Stamps, covers, albums and stock books always should be stored in an area where humidity and temperature are kept at reasonable and fairly constant levels. The combination of heat and humidity can activate the adhesive on the back of many stamps, causing them to stick to album or stock book pages. This has happened to me on occasion.

The added element of pressure on album pages or stock book pages can further aggravate the situation. When pages are packed tight with stamps, the adhesive has an even greater chance of sticking to the page.

Albums and stock books should never be overstuffed with stamps or pages. This can be tough on the pages and on the stamps, making either or both susceptible to damage.

Another way to avoid pressure on stamps is to make sure albums and stock books are stored upright. When an album lies flat on its side, the weight of the pages on top puts a lot of pressure onto the bottom pages. Storing the album upright distributes that weight evenly and reduces the pressure on both the stamps and the album binder.

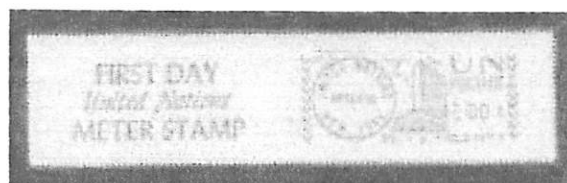
When an album is not in use for extended periods, it is recommended to periodically open it and carefully turn each page to ensure that all stamps are still affixed properly and that pages separate easily.

Postage Meters

We think of postage meter machines as a relatively modern invention. However, their use was sanctioned internationally by the Universal Postal Union in 1920.

The first companies to make postage metering machines (in the 1920s) were the Universal Automatic Machine Company of New Zealand and the Pitney-Bowes Postage Meter Company of the United States.

Some people collect metered mail, such as the example below which features the United Nations First Day of Metered Mail.



Dave's Corner

Recently, **John Marquardt** gave me an article he had copied on early U.S. grilled stamps. As you may know, these "grills" or tiny indentations in part of the paper of the stamp were intended to foil people that would try to clean the old ink off stamps with solvent and re-use the stamp. Many stamps of the late 1800s have grills, and sometimes they have different grills that make them distinct varieties (some valuable). Apparently, the dimensions and the number of grill "points" are key factors in determining the kind of grill.

In any event, grills are one more characteristic that the philatelic detective can explore and that can make our hobby even more interesting.

