



## *The Philately Fun Times*

The Columbia Philatelic Society  
February 2022

Dave Benish, Ed. 696-2597  
daveben@centurylink.net  
www.columbiaphilatelicsociety.org

### Next Meeting

We're glad to be back in business at our old location!

The next meeting of the <sup>FEB. 15th</sup> Columbia Philatelic Society will be ~~Tuesday, January 18<sup>th</sup>~~ at our usual place (Solstice), at 109 Keene St. in Columbia. The meeting will begin at 7:00.

As mentioned in our last newsletter, we have cleared it with the management of the facility. Their only requirement is that masks must be worn when not in the meeting room.

The program this month is:

## The 1930s: The Golden Decade of Collecting

Many, many stamp collectors got started in the 1930s, and it's fair to say that it was the most popular hobby of that time. Find out why this was such a special decade, along with examples.

There will be an introductory program, but also members are encouraged to bring anything interesting in their vast collections that they can share with other members.

We will also need to discuss the remaining 2022 possible programs at this meeting!

### Last Month

In January, we were at our old club home at Solstice for the first time in about two years. We had about a dozen members in attendance.

The program that evening was "Show and Tell", and we had a variety of interesting items such as an extensive "legacy" album with stamps from almost every country, Royal Egyptian stamps, Victorian plate number sets, an 1898 Trans-Mississippi essay stamp, a handout of interesting stamp facts, etc. An extra big "Thank You" to everyone who brought something!

### Dues

Most members have paid their \$10 dues for 2022, for which we're appreciative. **John Marquardt** will be at our next meeting accepting dues, or you can mail it to him at 609 Woodridge, Columbia 65201.

### Officers

President/Librarian/APS: **David Durbin**  
Vice President: **Bruce Taylor**  
Treasurer: **John Marquardt**  
Newsletter: **Dave Benish**  
Webmaster: **Rebecca DeCourley**

These officers have agreed to serve another term for 2022. Thank you!

### Stamp of the Month: U.S. 797

1937 Society of Philatelic Americans  
Souvenir Sheet



This stamp made use of the design of U.S. #749, the 10 cent variety of the National Parks issue. The Society of Philatelic Americans: was founded in 1894 as the Southern Philatelic Association; it became the Society of Philatelic Americans in 1918; and the organization ended in 1983.

## "T" Is For Topical Stamps

Continuing our journey into the website

### **alphabetilately.org**

we'll look topical stamps. Quoting from the article,

**"Topicals** are stamps related to a single topic or theme, such as birds, or trains, or household appliances.

This is a popular style of collecting, partly because there are fewer rules that govern it than for traditional philately, but also because it allows one to collect stamps from many countries on a much more manageable scale than a traditional world-wide collection.

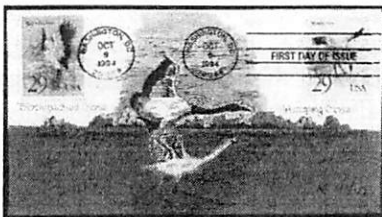
Topical collecting has its own organizations and standards, being in general more forgiving of non-philatelic material than the hobby overall. Some collectors see it as a way to express their individual tastes.

Given the number and variety of stamps issued since the first one in 1840, it may be impossible to think of a topic that has not been shown on a stamp somewhere - lightning, murder, and paperclips are among the unlikely items people have sought, and found on stamps.

Some say that topical collecting is the only way to go. The total number of stamps issued world-wide is in the hundreds of thousands. Just keeping up with new issues would leave one with time for little else.

Most collectors who want a world-wide collection have dealt with this by limiting their collections to only the stamps of a certain time period. Just the stamps up to 1940 is a popular choice, and Scott supports it by issuing a special catalogue, their Classic Catalogue, listing only stamps through 1940."

Lower potential cost is another reason many collectors turn to topicals, or add it to their existing country collections. Covers can also relate to a given topic.



## St. Louis Stamp Expo

Mark your calendars! March 25-27 will be the dates for this year's St. Louis Stamp Expo.

### This Month's Winner

Our president, **David Durbin**, scored an extra \$30 Columbian as this month's random winner!

### Auxiliary Markings on Covers

These are additional markings added to a cover other than a postmark. It may or may not have postal significance, but it serves to provide information about transportation, type of services, delay, damage or delivery issues, and so forth related to the mail and its handling.

Sometimes the word "ancillary" is used instead of "auxiliary", but it's basically the same thing.

These markings may be applied by postal officials or by private individuals. They can be handstamps, or merely written or printed words. The most common form of auxiliary marking is probably the "Return to Sender" pointing finger marking on covers. "Registered" is another marking that is commonly found. The area of auxiliary markings can be an interesting collecting specialty.



### Dave's Corner

What a great feeling to be back in our old meeting space and chatting with philatelic friends. We've gotten 2022 off to a great start, and I know it will get better and better as the year progresses!